

# iLedCloud Multimedia Information Releasing Platform Quick Guide

—v2017.05.15



iLedCloud Multimedia Information Releasing Platform is high efficient, convenient and user friendly. It contains excellent program editing function that can manage and share all your programs from anywhere.

Follow the six steps below, then you can release your programs:


## 1. Installing supporting PC software

Please go to Onbon's official website: <http://www.onbonbx.com/>. Click "Download", and download the corresponding multimedia editor according to your controller card version. If you use YQ controller card, download LedshowYQ2016 software. If you use 6Q, download LedshowTW2016 software. Install in your PC.

### Download > PC Software BX-YQ series full color software

Title	Instruction	Number	Download
Ledshow YQ mobile software for Android V1.2.2	Ledshow YQ mobile software for Android	682	
LedshowYQ2016 V17.4.19.1	LedshowYQ2016 Software(V16.11.01 Above version)Support setting the screen parameter and scan configuration of new generation of high refresh frame screen.Support intelligent scanning.Added automatic correction time from internet function.Many details have been optimised	1908	

### Download > PC Software Single & dual color software

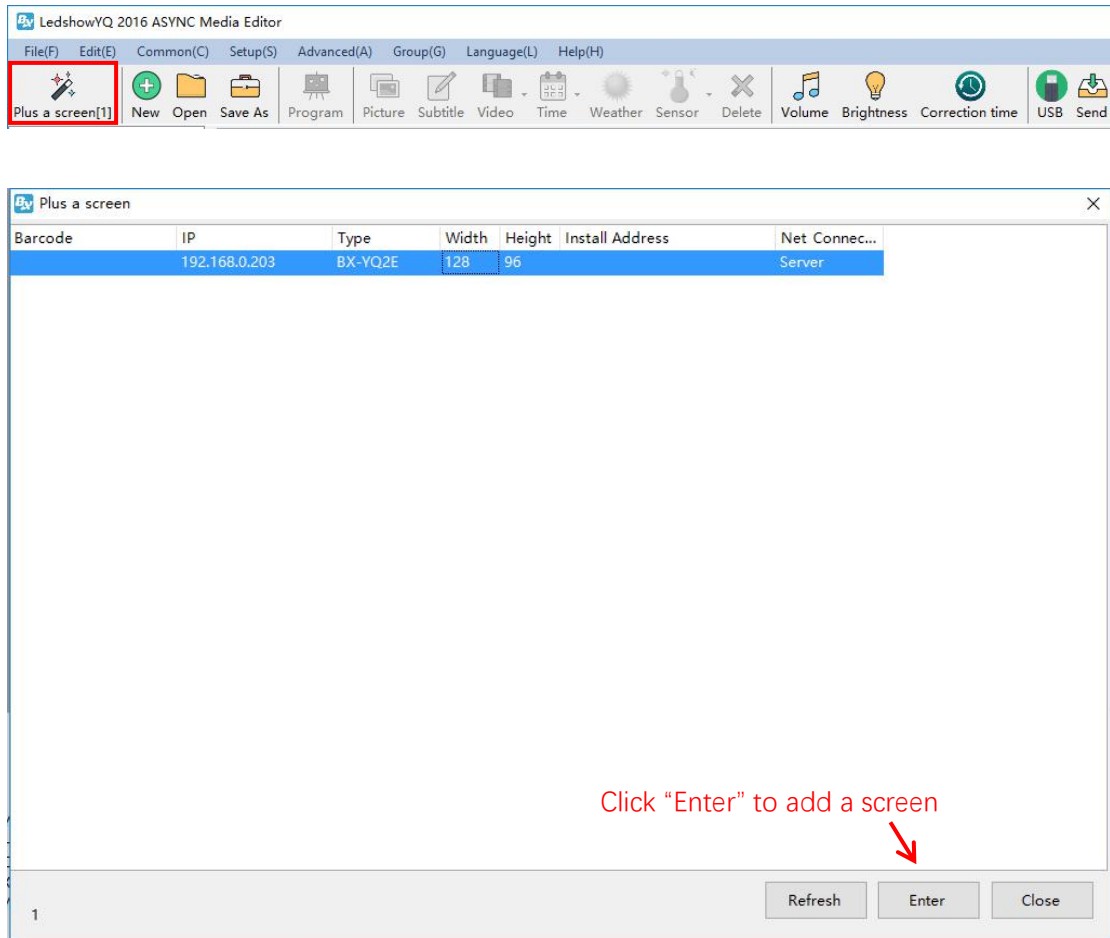
Title	Instruction	Number	Download
LedshowTW 2017 V17.04.07.00	Match with BX-5&6/DX series controller,the latest update functions: BX-WIFI setting	3069	

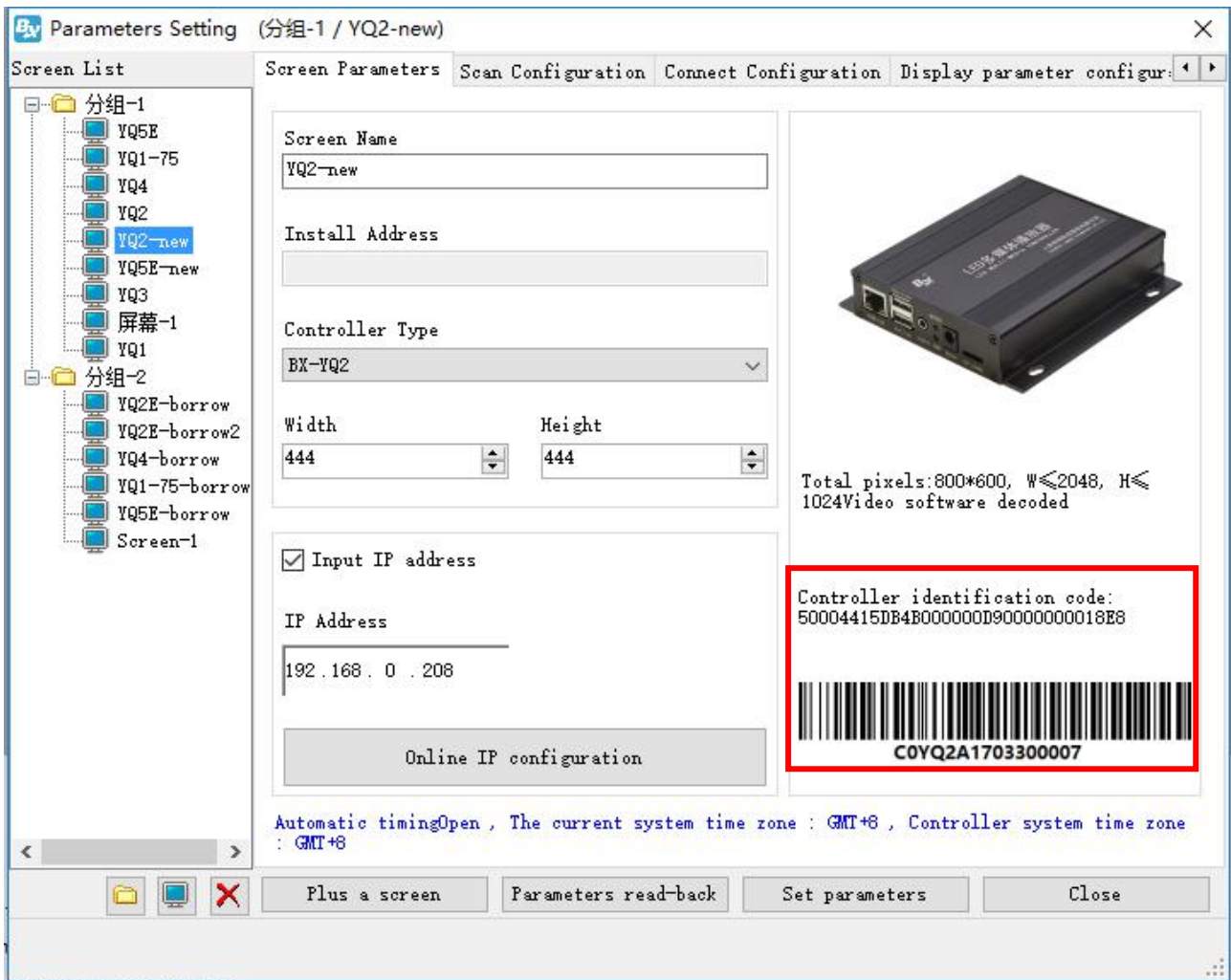
## 2. Configuring IP of the multimedia device and server properties.

- YQ controller card

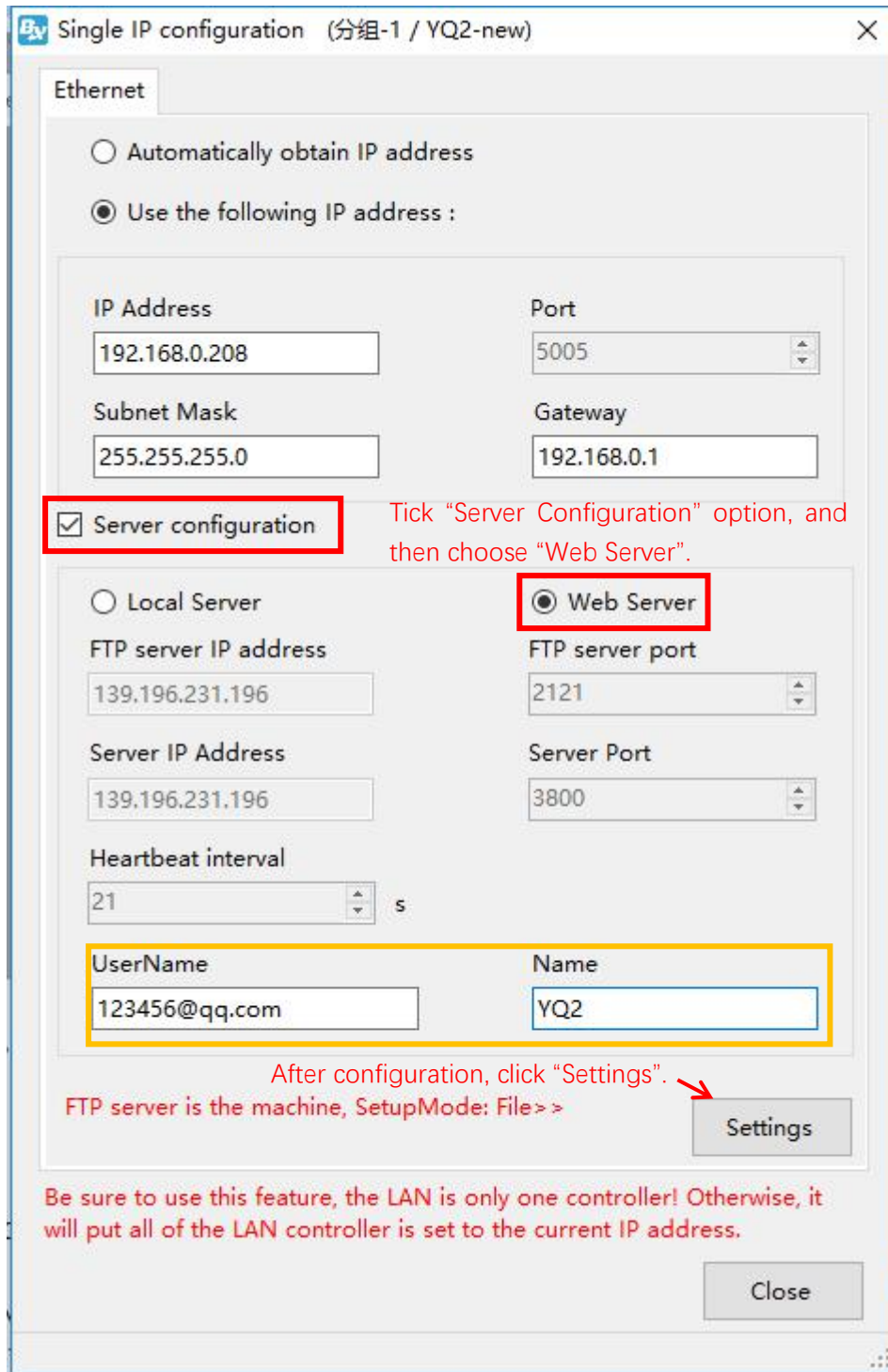
Connect YQ controller card to the power and cable. Keep the PC that installed LedshowYQ2016 and your controller card in the same network and segment. Open LedshowYQ2016 and click "Plus a screen". After adding the screen, you can configure the

connection of your controller card and get PID and bar code of your controller cards. (Setup-Set Screen Parameters) You can find the bar code from either “Set Screen Parameters” or from the controller card.



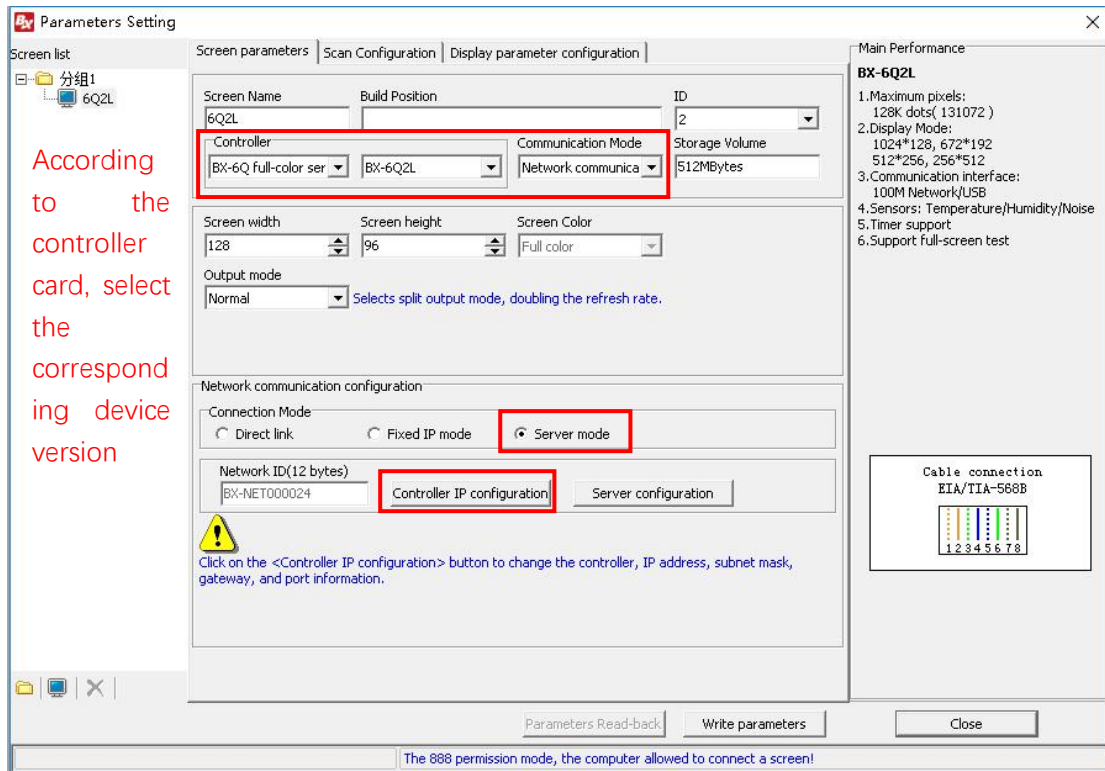


You need to edit controller card's IP in "Single IP Configuration". (Setup-Single IP Configuration). Tick "Server Configuration" option, and then choose "Web Server". Once connect to the internet, you can manipulate your controller card via our platform. If you enter "Username" (email or phone when you register for our platform) and "Name" (screen name for distinguish) when you configure the IP, when the controller card connects to internet, it will be automatically added under the corresponding user's account, and no need to be manually added. **(Remark: Only one device can be connected in your local area network when you configure IP.)**

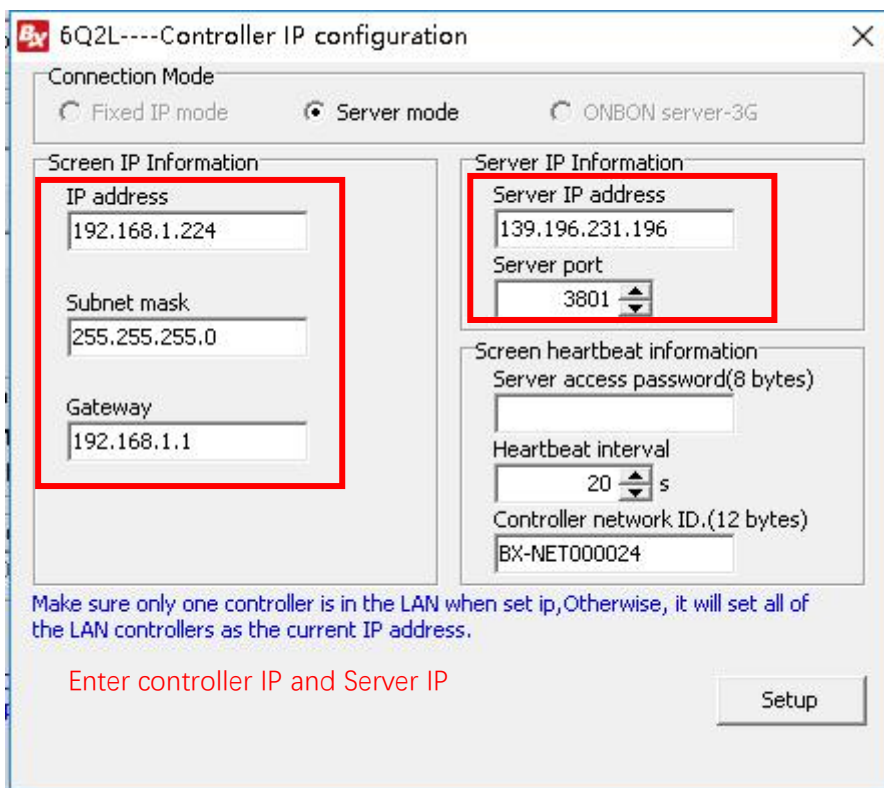


- 6Q Controller card

Connect 6Q controller card to the power and cable. Keep the PC that installed LedshowTW2016 and your controller card in the same network and segment. Open LedshowTW2016 and click "Set Screen Parameters" from "Setup". Choose the corresponding device model according to bar code. (You can find the bar code from the controller card.) Change the "Communication Mode" to "Wifi Communication".



Choose “Server Mode” from “Wifi Mode”, and then click “Controller IP Configuration”. In the IP configuration interface, enter controller IP. Server IP: 139.196.231.196; Port: 3801. Then click “Setup” button. **(Remark: Only one device can be connected in your local area network when you configure IP.)**

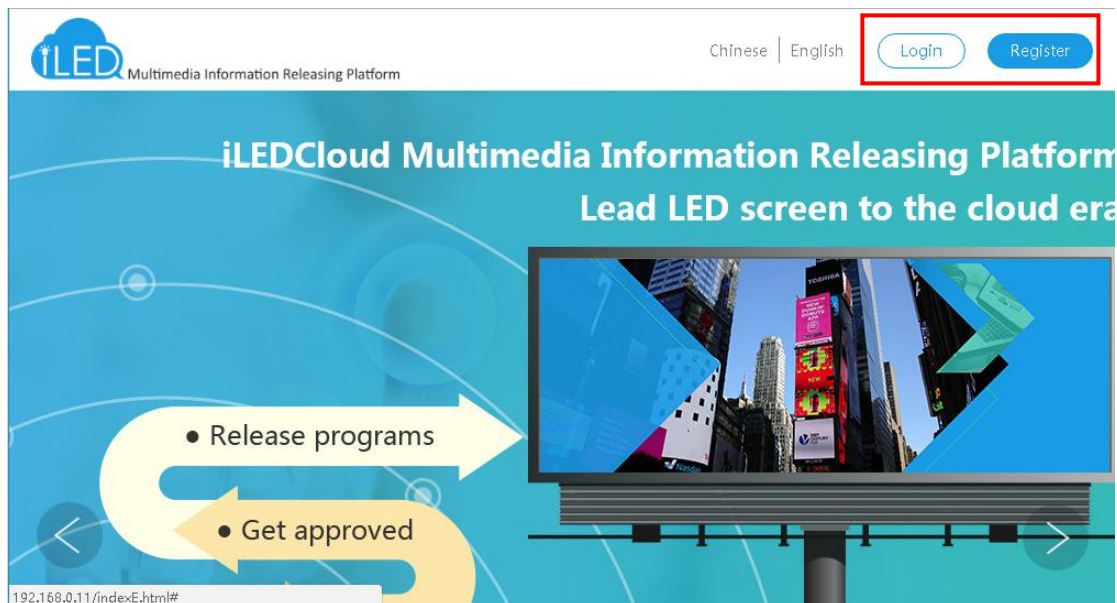


6Q controller card bar code can be found from following image:



### 3. Logging in your account

Go to <http://www.iledcloud.com> and click “Login” to enter iLedCloud Multimedia Information Releasing Platform.

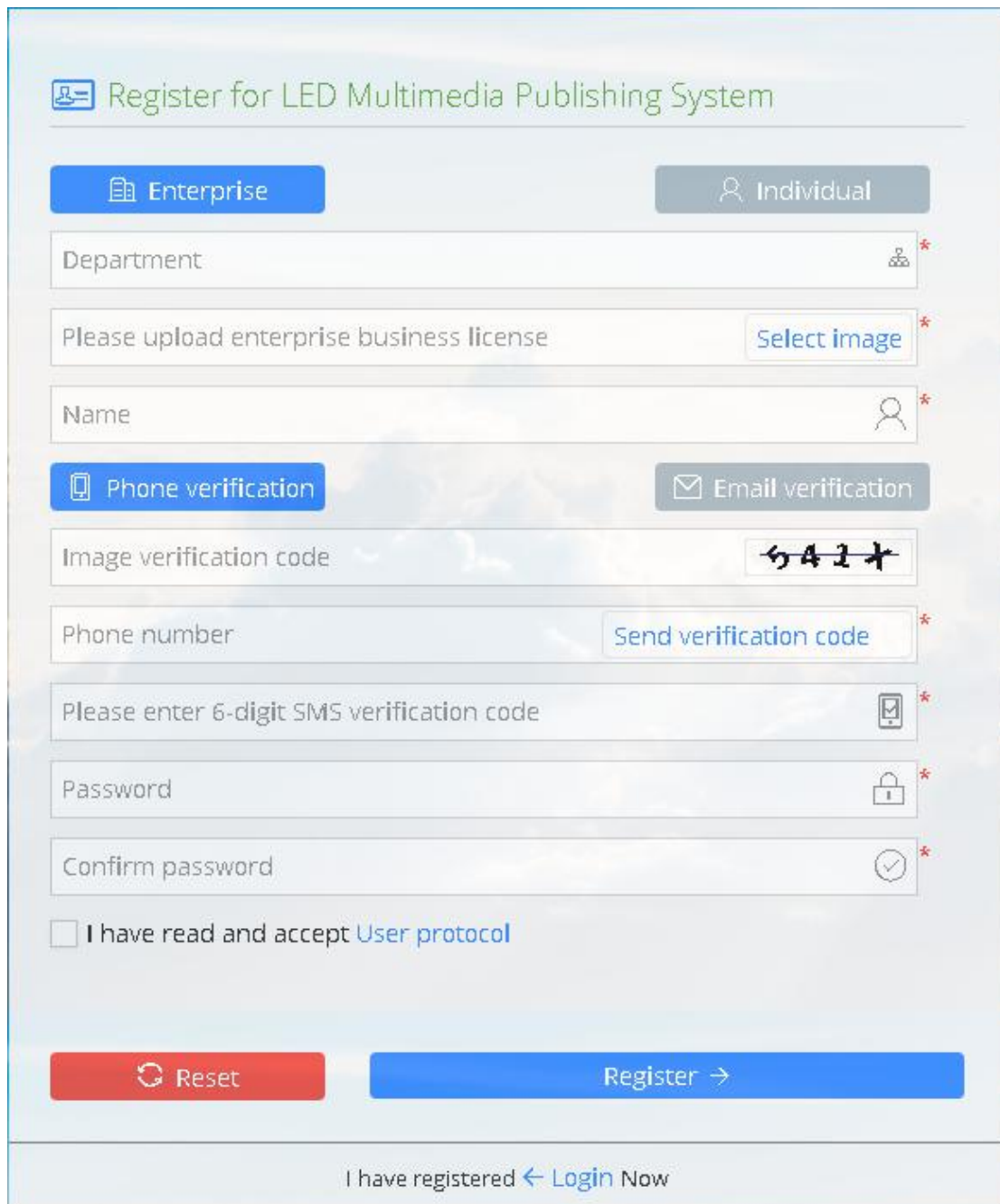


If you haven't registered, click “register” at the right bottom to register.

- Enterprise User: You have to provide your business license and email/phone number when registration. After verifying your email/phone number, please contact customer service to

apply for reviewing. If approved, you can then login with your email/phone number.

- Personal User: You only need either email or phone number for registration. If you register with your phone number, you can login after the phone number is verified; if you register with your email, you have to contact customer service after verifying the email to finish the registration process.



The image shows a registration form titled "Register for LED Multimedia Publishing System". It has two main sections: "Enterprise" and "Individual". The "Enterprise" section includes a "Department" field, a "Please upload enterprise business license" field with a "Select image" button, and a "Name" field. The "Individual" section includes a "Phone verification" and "Email verification" toggle, an "Image verification code" field with a CAPTCHA image, a "Phone number" field with a "Send verification code" button, a "Please enter 6-digit SMS verification code" field, a "Password" field, and a "Confirm password" field. There is also a checkbox for "I have read and accept User protocol". At the bottom, there are "Reset" and "Register" buttons, and a link for "I have registered < Login Now".

Register for LED Multimedia Publishing System

Enterprise Individual

Department \*

Please upload enterprise business license Select image \*

Name \*

Phone verification Email verification

Image verification code 542\*

Phone number Send verification code \*

Please enter 6-digit SMS verification code \*

Password \*

Confirm password \*

I have read and accept [User protocol](#)

Reset Register →

I have registered < [Login Now](#)

If you have registered, enter the email/phone number, password and verification code to login.

iLEDCloud Multimedia Releasing Platform v1.2.0

123456@qq.com

\*\*\*\*\*

Image verification code: 9821

Login

← Forgot password Register now →

#### 4. Adding screen

After logging in, click “Add screen” in “Screen Management”. Enter “Serial Number” and “Name” in the pop up window to finish adding screens. Notice that you can only add screens when controller cards are online.




iLEDCloud Multimedia Releasing Platform v1.2.0

Home > Resource > Screen

1. Click Screen

2. Click "Add"

ID	Name	Width	Height	Department
Group:[(None)] (1)				
185	yq3	192	384	wyk
Group:[6Q-128*96] (9)				
83	6Q2-17022310	128	96	Suzhou iLEDClc
88	6Q1-128	128	96	Suzhou iLEDClc
89	6Q2L-128	128	96	Suzhou iLEDClc
110	6Q2-17021410	128	96	Suzhou iLEDClc
116	6Q2-17021310	128	96	Suzhou iLEDClc
117	6Q2-1-161230	128	96	Suzhou iLEDClc
138	6Q1	128	96	Suzhou iLEDClc
139	6Q2-17040110	128	96	Suzhou iLEDClc
160	6Q2-testbarcode	128	96	Suzhou iLEDClc

2. 

### Add screen

Device code: 50004457CB4A000000310000000 \*

Screen Name: YQ1-75

3. Enter serial number and name of the device.  
You can customize the name in order to distinguish with each other.

Add

For a YQ controller card, if you enter "Username" and "Name" when you configure the IP, it will be automatically added under the corresponding user's account, otherwise it needs to be manually added. We recommend you to use bar code as serial number. Use identification code

when no bar code found in your controller card.

For a 6Q controller card, we currently only support manually adding with bar code as serial number.

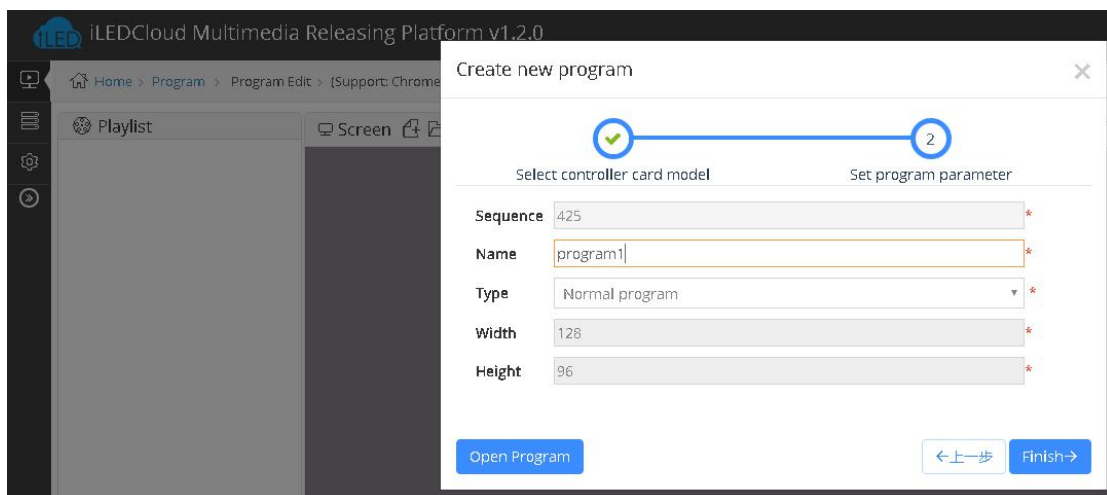
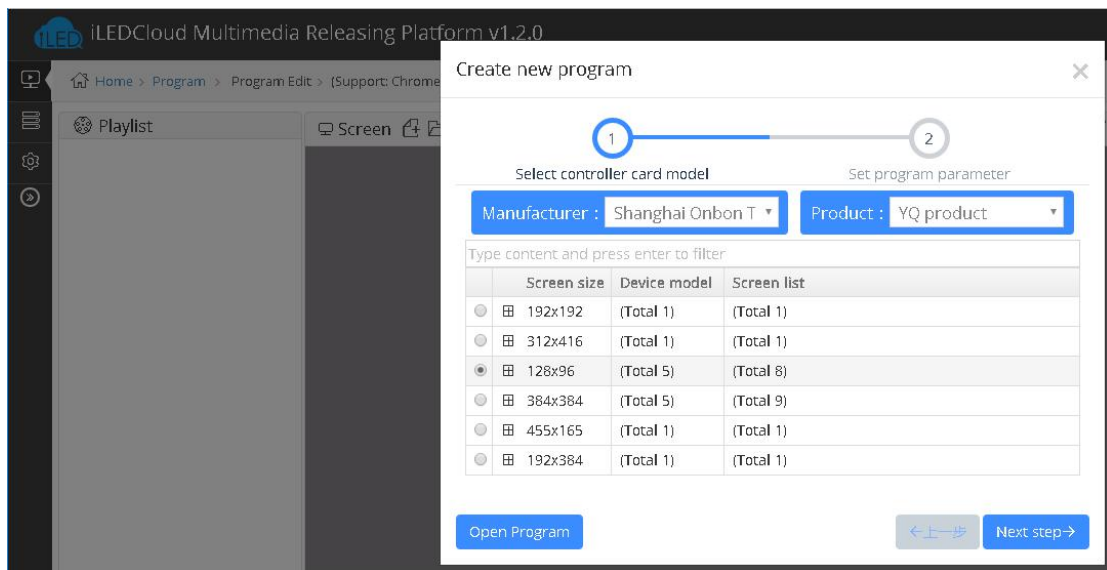
After adding screens, you can check screen information in “Screen Management” page.

Home > Resource > Screen

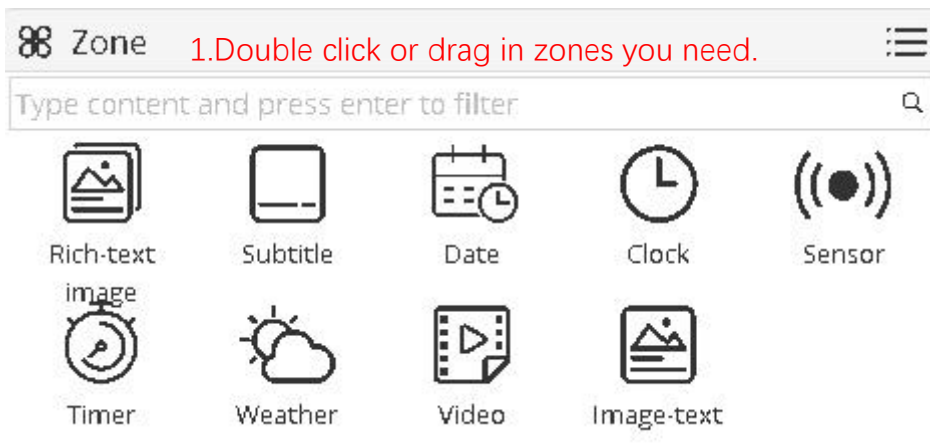
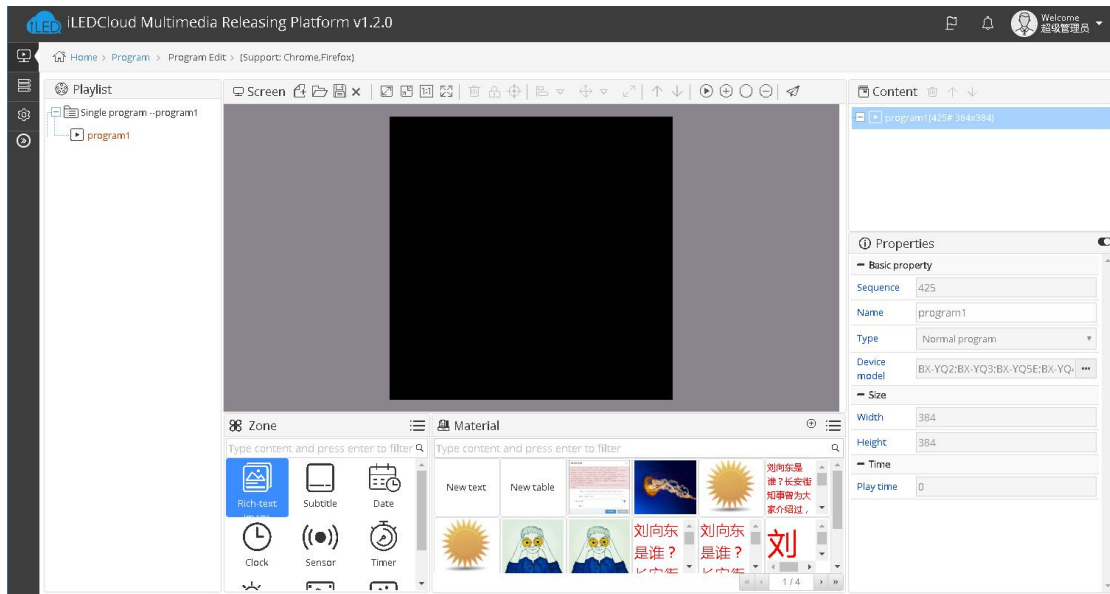
ID	Name	Width	Height	Department	IP Location	Location	Manufacture	Device model	Model	Online	Screensh	Firmware versio	Commer	Operation
4. Once you add screens successfully, you can check screen status. Green=online; Red=offline.														
159	YQ2E-384	128	96				Shanghai C	COYQ2E1606130023	BX-YQ2E	●	(None)	16121400		
169	YQ2E-borrow	312	416	Suzhou ILEDClo			Shanghai C	COYQ2E1702100037	BX-YQ2E	●	(None)	17031700		

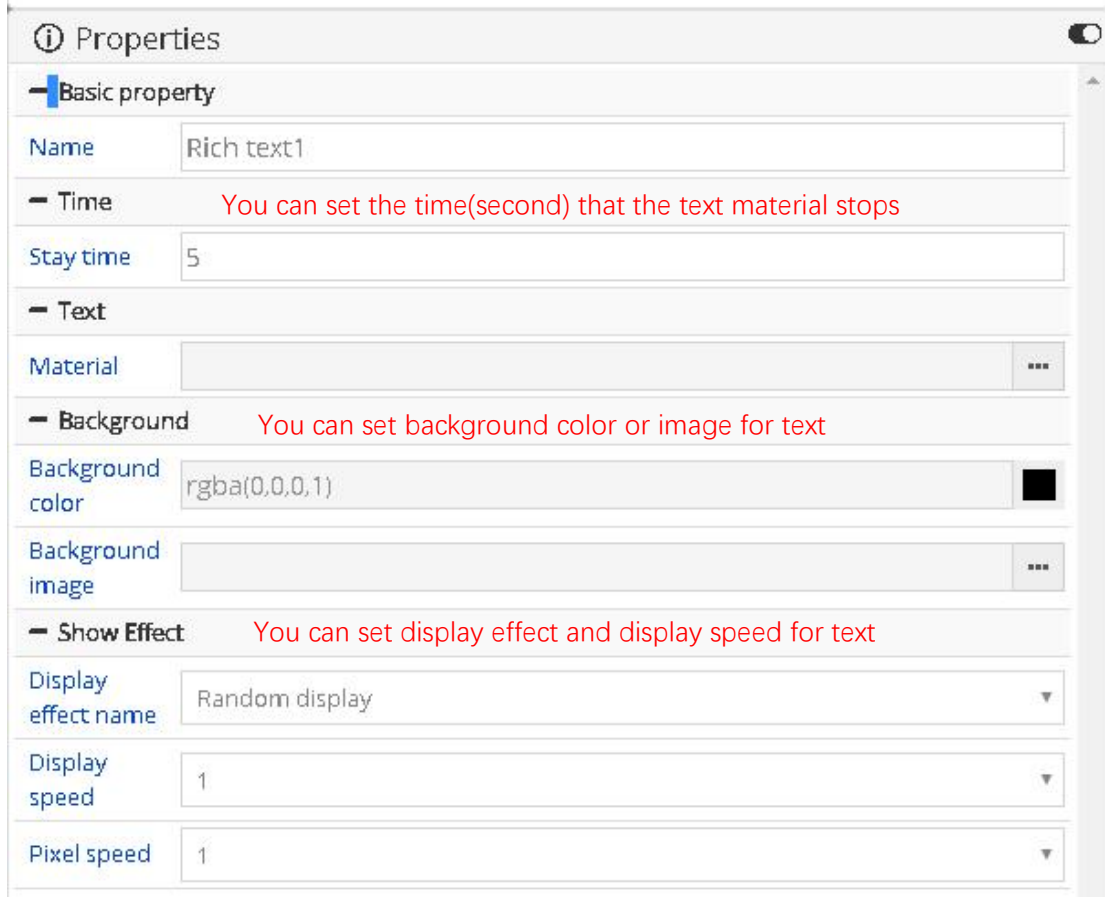
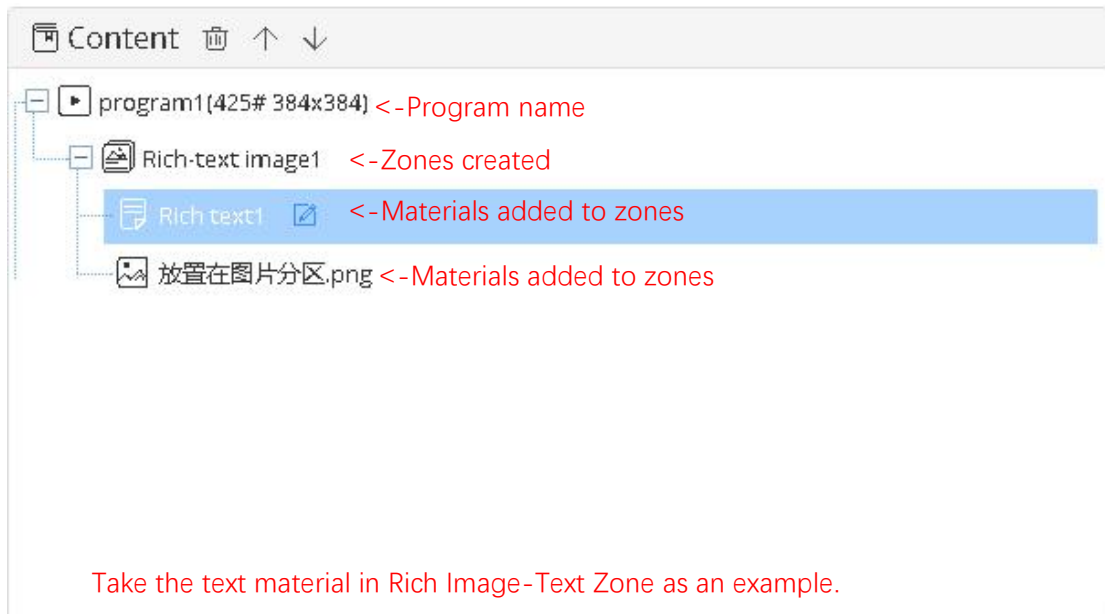
## 5. Editing programs.

Click “Program management” in “Program” to create program guide. First of all, you need select controller card manufacturer, product series, screen sizes and other parameters, and click “Next”. After entering name and clicking “Finish”, you finish creating new programs.



Then, you can double click to add zones. Image, videos and text files can also be added by double clicking or dragging in. “Playlist” locates at the left side of the page, which contains the program that you are editing and other programs in this list. The blank space locates at the middle is the screen you edit, and below is “Zone” and “Material” that you may use for programs. On the right of the page are dendrogram and screen property.





The screenshot displays a software interface with two main sections: a 'Content' tree and a 'Properties' panel.

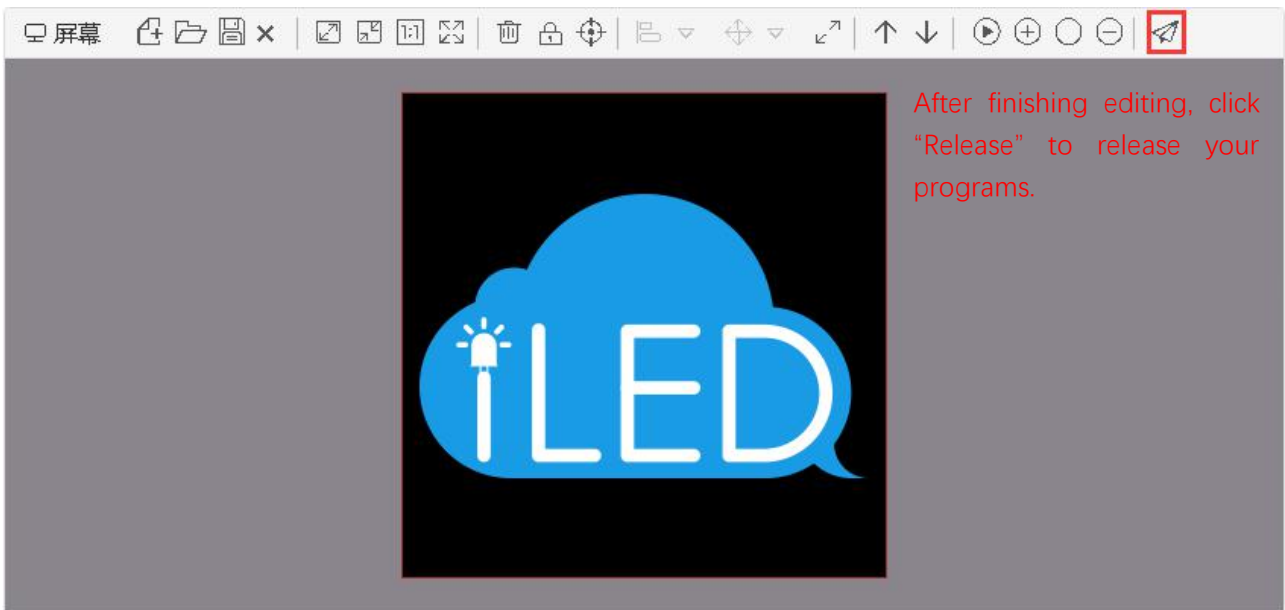
**Content Tree:**

- program1(425# 384x384) <-Program name
  - Rich-text image1 <-Zones created
    - Rich text1 <-Materials added to zones
    - 放置在图片分区.png <-Materials added to zones

Take the image material in Rich Image-Text Zone as an example.

## 6. Releasing programs

After finishing editing programs, click "Release" button and then you will see Program Releasing Guide which helps new user to learn how to release programs.



### Send single program

1 **Play settings** 2 Approve 3 Select screen 4 Release

#### Playlist settings

List type: Normal playlist \*

Name: Single program --pro \*

Width: 384 \*

Height: 384 \*

Audio mode: Video priority \*

#### Program play settings

Play mode: Fixed times play

Play times: 1 \*

Start date: 2017/05/11 \*

End date: 2027/05/11 \*

Start time: 00:00:00

End time: 23:59:59

Week:  Monday  Tuesday  Wednesday  Thursday  Friday  Saturday  Sunday \*

Manually approve  Clear controller card

← Last step **Next step** →

## Send single program



Play settings



Approve



Select screen



Release

Result:  Approved  Fail to be approved

Approval comment:

Clear controller card

Click "Next step"

← Last step

Next step →



# Send single program



Play settings



Approve



Select screen



Release

Usable screen

All screens

Multi pages selection. Selected: 1

<input type="checkbox"/>	ID	Name	Type	Width	Height	Location	Status	Comment
^ Group:[YQ-384*384] (1)								
<input checked="" type="checkbox"/>	159	YQ2E-384	LED	384	384		Online	

↑  
Select screens you need

Search icons:

Navigation: Page 1 of 1 10

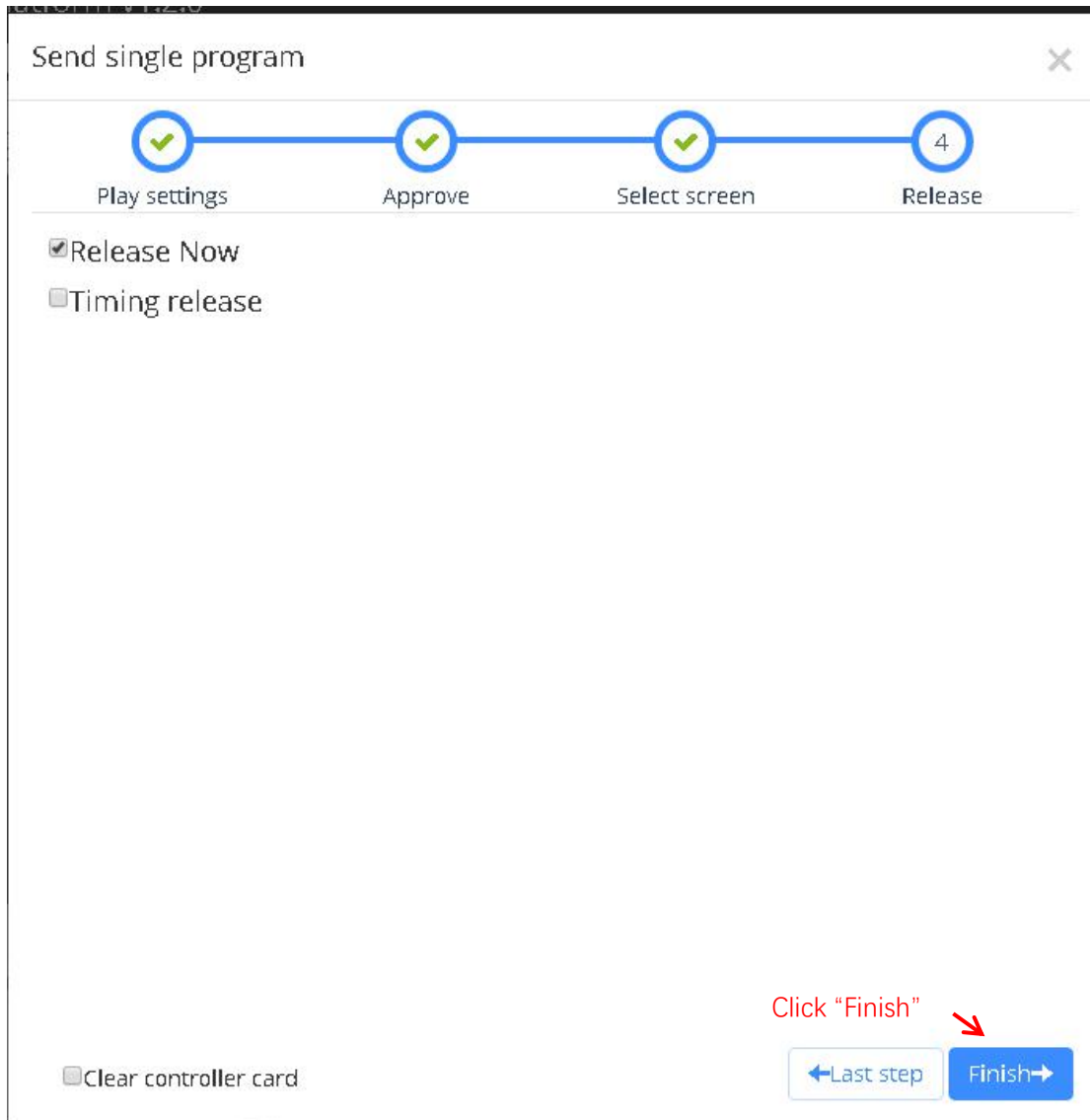
View 1 - 1 of 1

Click "Next step" →

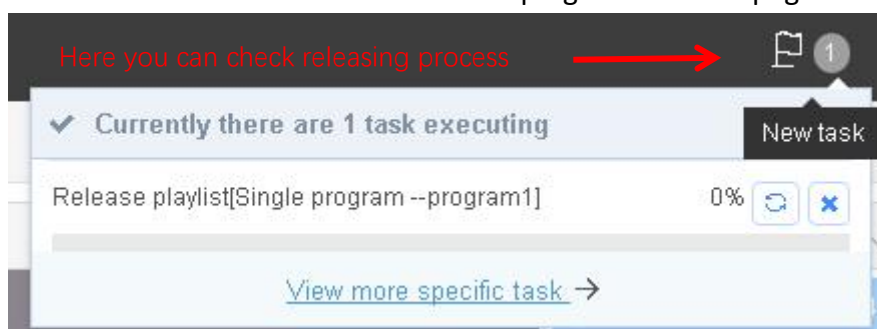
Clear controller card

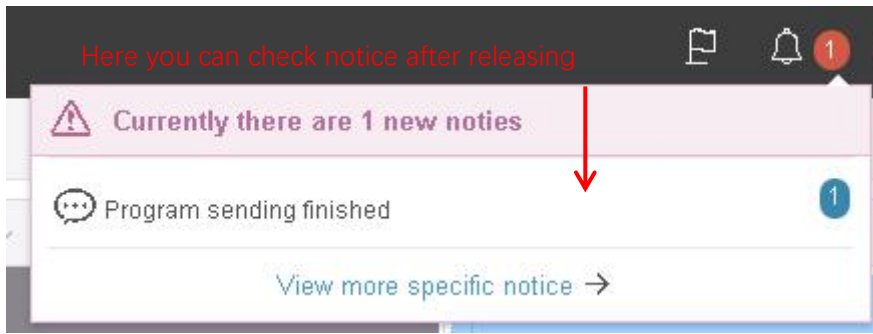
← Last step   Next step →





When you finish steps in Program Releasing Guide, you can check program releasing process and status information from the "Notice" icon at the top right of the webpage.





Notice list Click "Released program" you can check if the program you just finished is released successfully. ✕

Read	Type	Content	Time
No	Program sending finished	Task [Screen task [YQ2E-384]-Release playlist[Single program -- program1]]state:Success	2017/05/11 19:51:03

Read all << < 1 / 1 > >>

Once you successfully release your programs and connect your device and screen with cable, you can instantly watch the programs you edited.

